

Sleep in Style - Claridge's launches chic limited edition pyjama collection

Legendary Art Deco London hotel Claridge's is launching its first limited edition collection of Claridge’s Pyjamas, inspired by its distinguished design heritage, reflecting the golden age of Art Deco motifs and details throughout the hotel.



Conjuring up the heady glamorous days of 1920’s life at Claridge’s, the bespoke pyjamas are a timeless design and can be perfectly paired with matching eye masks. Available in the hotel’s signature jade green or in soft white, they are finished with mother of pearl buttons and contrasting piping trim, complete with Claridge’s historic crest on the top pocket. The final flourish is the elegant Claridge’s box they are smartly packed in.

The pyjamas are a design collaboration with long time Claridge’s guest and friend,

Rebecca Marks, creative director of Green Wolf Studio, and are produced exclusively for Claridge’s by Derek Rose, a family owned British company founded in 1926.

Commenting on the launch, Rebecca Marks said *“This has been a dream project to work on with the team at Claridge’s. I’ve loved exploring the hotel’s rich design history, and pouring over every little detail to ensure these pyjamas - like everything else they do - are really perfect, stylish and of course comfortable which is so important in this new world of working from home! I am so excited that we are already planning our next set of designs.”*

The 100% jacquard cotton Claridge’s Pyjamas are available for men and women in sizes small, medium and large, and are priced at £220 for women and £250 for men. Eye masks are priced at £65. They can be purchased directly from the hotel or online at the Claridge’s Shop at www.shop.claridges.co.uk.

[Back](#)

COUNTRY LIFE

Relax and unwind



▲ **Vanity case**, £45, Otis Batterbee (020-3457 8425; www.otisbatterbee.com)



▲ **Dr Barbara Sturm advent Calendar**, £405 (020-7959 0840; <https://en.drsturm.com>)



▲ **Magnolia purple gown**, £85, Royal Botanic Gardens Kew Shop (020-8332 3124; <https://shop.kew.org>)



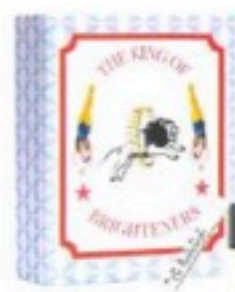
▲ **Magic healing citrine bracelet**, £42, T Balance (www.tbalance.co.uk)



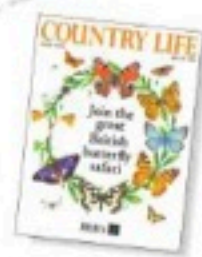
▲ **Starlit Mandarin and Honey scent**, £105, Jo Malone (www.jomalone.co.uk)



▲ **Personalised wicker bicycle basket**, £70, Hill & Ellis (020-3488 5890; www.hilandellis.com)



▲ **Circus set**, The Brighteners, £97, Dr Sebagh (020-7637 0548; www.drsebagh.com)



▲ **COUNTRY LIFE one-year subscription**, Six issues for £6, followed by £38.25 per quarter (www.magazinesdirect.com)



▲ **Poudre d'Orfevre limited-edition illuminating powder**, £75, Hermès (www.hermes.com)



▲ **Notte di Stelle candle**, £72, Acqua di Parma (www.acquadiparma.com)

► **Women's pyjamas**, £220, Claridges Shop (020-7107 5560; www.shop.claridges.co.uk)



▲ **The Hair Oil**, 30ml, £38, Augustinus Bader (www.augustinusbader.com)

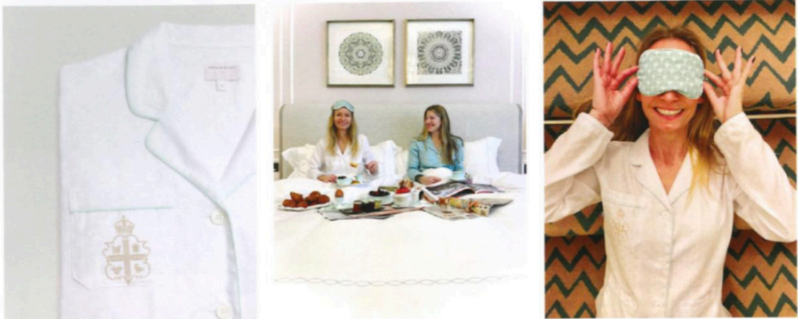
► **Digital Face Mist**, £29, ilapothecary (07342 105395; www.ilapothecary.com)



► **Initial mug**, £38, Blank Earth (www.blankearth.co.uk)

MARYLEBONE LIFE

CLARIDGE'S LAUNCHES ITS FIRST LIMITED EDITION PYJAMAS INSPIRED BY ITS ART DECO HERITAGE



Claridge's, the legendary Art Deco London hotel, is launching its first limited edition collection of Claridge's Pyjamas, inspired by its distinguished design heritage, reflecting the golden age of Art Deco motifs and details throughout the hotel.

Conjuring up the heady glamorous days of 1920's life at Claridge's, the bespoke pyjamas are a timeless design and can be perfectly paired with matching eye masks.

Available in the hotel's signature jade green or in soft white, they are finished with mother of pearl buttons and contrasting piping trim, complete with Claridge's historic crest on the top pocket. The final flourish is the elegant Claridge's box they are smartly packed in. The pyjamas are a design collaboration with long time Claridge's guest and friend, Rebecca Marks, creative director of Green Wolf Studio, and are produced exclusively for Claridge's by Derek Rose, a family owned British company founded in 1926.

Commenting on the launch, Rebecca Marks said "This has been a dream project to work on with the team at Claridge's. I've loved exploring the hotel's rich design history, and pouring over every little detail to ensure these pyjamas - like everything else they do - are really perfect, stylish and of course comfortable which is so important

in this new world of working from home! I am so excited that we are already planning our next set of designs."

The 100% jacquard cotton Claridge's Pyjamas are available for men and women in sizes small, medium and large, and are priced at £220 for women and £250 for men. Eye masks are priced at £65. They can be purchased directly from the hotel or online at the Claridge's Shop at shop.claridges.co.uk.

ABOUT CLARIDGE'S

At the centre of London's Mayfair, Claridge's, part of Maybourne Hotel Group, embodies grand English style, timeless glamour and impeccable, intuitive and highly tailored service. It is London's art deco jewel, and home to elegant rooms and suites. From London's finest afternoon tea in the Foyer, Michelin star dining from Daniel Humm at Davies and Brook to vintage champagnes and cocktails at Claridge's Bar, all are part of the hotel's unique splendour and charm.

Claridge's, The Connaught,
The Berkeley
Maybourne Hotel Group
claridges.co.uk



All products are independently selected by our editors. If you buy something, we may earn an affiliate commission.

STYLE

Christmas gift guide: For her

Ultra-chic gifts for the women in your life

By Chandler Tregaskes

16 November 2021



23/23

Claridge's

Women's Pyjamas - Jade

£225

CLARIDGE'S

BUY NOW